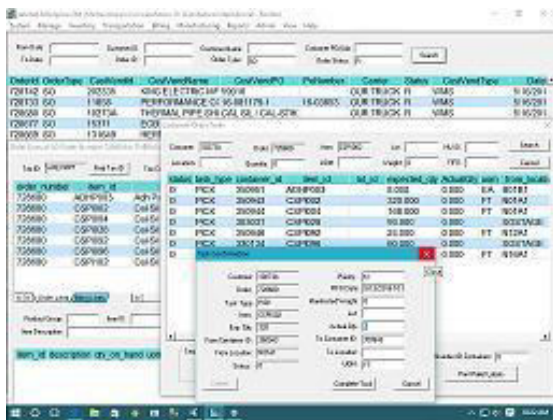


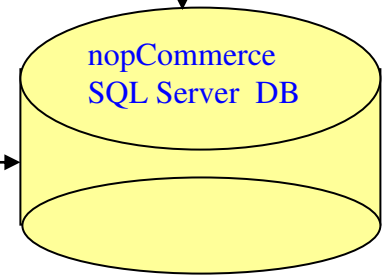
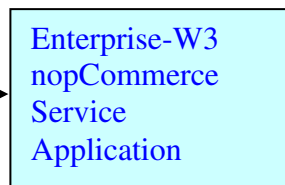
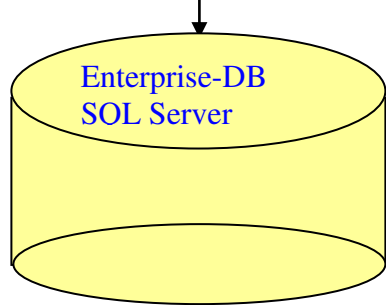
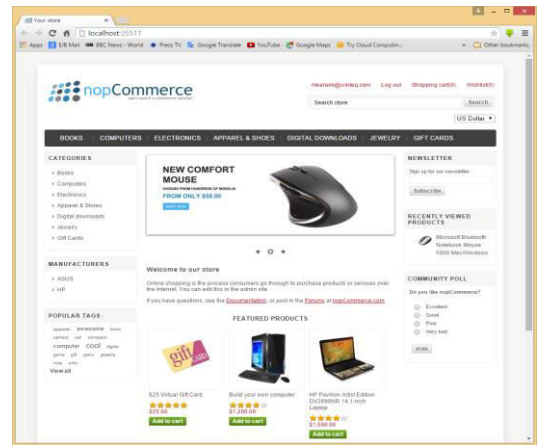
# Winteq “Enterprise” Warehouse Management System

“Enterprise” is the Warehouse Management System (WMS) from Winteq. It is a Windows application written in C++ programming language that utilizes Microsoft SQL Server database as the back-end data depository, and Crystal Reports engine for reports viewing and printing. Diagram below shows Enterprise components:

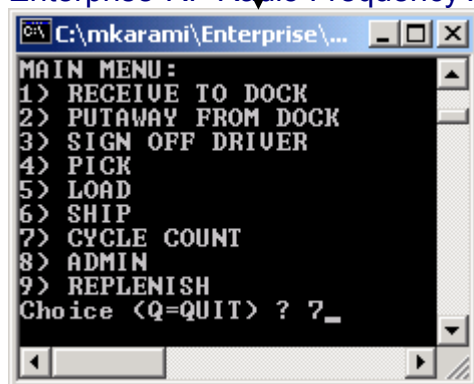
## Enterprise-OM Order Manager Application



## nopCommerce Web Store-Front in the Cloud



## Enterprise-RF Radio Frequency Application



### **“Enterprise” WMS Component Diagram:**

Enterprise has 4 components. 1) Enterprise-DB is SQL Server database; 2) Enterprise-OM is a user-friendly Order Manager and Inventory Control Windows application for warehouse staff and management; 3) Enterprise-RF is a Radio Frequency application for RF scanners (hand-held or on forklifts) in the warehouse; and 4) Enterprise-W3 is a server service application that communicates with nopCommerce web-storefront application in the cloud (for customers who would like to have web-commerce). The following is a list of “Enterprise” WMS features:

#### **Core Features**

- Order Entry and Processing
- Report Generation and Printing
- Cycle Counting & Physical Inventory
- Pallet Exchange and Management
- System Administration
- Receiving to Dock and Pallet Label Printing
- Putaway from Dock (Creates inventory)
- Inventory Control and Warehouse Management
- Appointments and Yard/Dock Management
- Order Picking, Staging, Loading, and Shipping

#### **Optional Features**

- Customer Billing and Invoicing
- Radio Frequency (R/F) Capability
- Customer Returns Processing
- Transportation Order Manager
- Web Store Front Functionality
- Bar-Code Scanning and Printing
- Work Order Processing for Manufacturing
- Contract Job Issues and Returns
- Warehouse To Warehouse Transfers
- Financial Accounting System Functionality

#### **Services and Support**

Winteq provides a full suite of services to augment system implementation. These services are:

- Requirements Study
- Project Implementation
- Technical User Training
- Full System Documentation
- Upgrades via Maintenance and Support
- Phone and on-site support

#### **System Specification**

Winteq’s Enterprise Warehouse Management System is built to run on Microsoft Windows Operating Systems. Proven technologies such as C++ Programming language, ODBC, and Crystal Reports engine has been used to develop “Enterprise”. Enterprise development criterias were a) client/server technology, b) distributed computing, c) object oriented programming, d) high performance transaction processing, and e) user friendliness.

#### **About Winteq (The Win-Win Company)**

Winteq was founded in 1997 to develop a Warehouse Management Systems (WMS) software. Winteq has extensive experience in WMS Product Design, Software Project Management & Implementation, C++ and SQL Server Development. Winteq believes in a Win-Win philosophy of partnering with the customer. For more information visit us at [www.winteq.com](http://www.winteq.com) or send email to [sales@winteq.com](mailto:sales@winteq.com) .